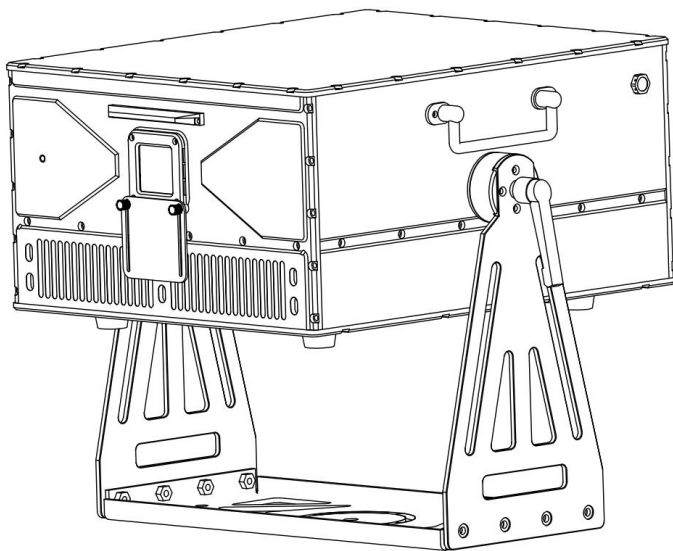


USER MANUAL



SLS-OL30 (RGB)

Please read this manual carefully before using the product

CONTENT

1. Safety Guidance.....	3
2. Packing List.....	4
3. Installation Notes.....	4
4. Technical Parameter.....	5
5. Light Control Panel.....	6
6. FB4 Manual.....	7
7.Power supply and signal connections	22
8. Maintenance.....	23
9. Warning and Declaration.....	24

1. Safety Guidance

Thank you for choosing our products. For your safety, please read this manual carefully before operation. This manual includes installation and use information.

The equipment is packaged in good condition when leaving the factory. Please operate according to the user manual. The machine failure caused by man-made reasons is not covered by the warranty.

1. When using the product, please open the light and check it carefully to ensure that there is no damage caused by transportation..
2. Don't let children operate the machine.
3. Use safe ropes when fixing the equipment, and hold up the bottom when moving the light.
4. The equipment must be installed in a well-ventilated place .
5. Ensure that the ventilation holes are unobstructed to avoid overheating when the light is running.
6. Before operation, make sure that the power supply voltage matches the power supply voltage required by the equipment.
7. Please ground the conductor to prevent electric shock.
8. In case of fire, do not place combustible items next to light when they are running.
9. Please carefully check whether the power cord is damaged before turning on the light. If it is damaged, replace it immediately.
10. To avoid electric shock or fire, avoid flammable liquid, water, metal and other electrical conductors entering the light. If any foreign body enters the light, please cut off the power supply immediately .
11. Avoid operating the light in a dirty and dusty environment, and clean and

maintain the light regularly.

12. Do not touch the wire when the light is running to prevent electric shock.

13. Avoid entanglement of the power cord with other wires.

14. Do not open the light housing without authorization

15. Please cut off the power when the light is not used for a long time or for maintenance.

16. Do not look directly at the light when it is running.

2. Packing List

This series of products are packed in standard carton, air carton is optional, please read this manual carefully before using. Follow operating rules to avoid damage to light or bodily injury. Please handle the products carefully after receiving them, and check whether the products are damaged during transportation. Open the cover of the box, take out the relevant accessories in the box, take out the light, and place the light on a horizontal table to facilitate related operations. Note: Do not squeeze plastic parts to avoid breakage or distortion. Check the parts as follows:

Light 1pc	Power cable 1pc	manual 1 book
ILDA cable 1pc	DMX512 cable 1pc	Safety cable 1pc

3. Installation Notes

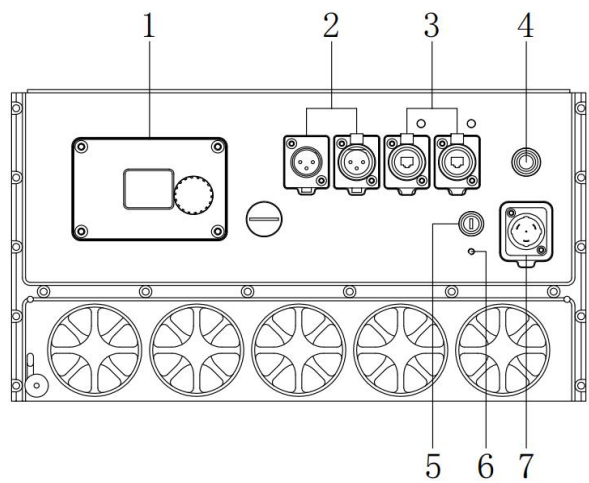
1. When install this equipment please make sure there's no flammable surfaces (decorated things, etc) within at least 2.5M and maintain minimum distance of 0.5M from the equipment to the walls.

2. Before installation, please confirm whether the power supply voltage you are using matches the voltage marked by the light.
3. Make sure that the ventilation fan and exhaust passage are not blocked by other equipment or decorative materials, such as newspapers, tablecloths, curtains, etc.
4. The equipment should be fixedly installed. To ensure the stability of its installation point, at least a load-bearing structure that can withstand more than ten times the weight of the product.
5. For safety reasons, this machine should be connected to a main socket with a ground wire.

4. Technical Parameter

1. Power supply: AC 100~240V 50/60Hz
2. Rated Power: 700W @220V
3. Diode : ☐ Green ☐ RGB FULL color
4. Working method: built in Pangolin FB4-SE
5. Working mode: DMX512/Ethernet
6. DMX Control Channel: 16CH
7. Cool system: intelligent air cooling system
8. Working environment: outdoor
9. Working temperature: -30°C to 40°C
10. Gross weight: 56kg
11. Flight case size: 55 x 54 x 54cm

5. Light Control Panel



No.	Function
1	FB4 display window
2	FB4 DMX-512 (IN/OUT)
3	Ethernet signal cable ports
4	220V power input
5	safety lock
6	Ground
7	Power in

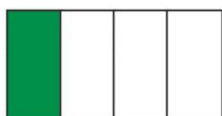
6. FB4 Manual

	Socend Menu
Operation Mode	BEYON/QS
	DMX-512
	ArtNET
	Autoplay
	Time Code
	Slave Mode
	Test Mode
DMX address	Start address 1-512
	Termination auto /on/off
	Profile FB3/FB4
	Timeout 3.0(0-5.0)
Artnet Settings	Universe
	Start Address 1-512
	RDM
	Profile FB3/FB4
	Timeout 3.0
Autoplay Setup	Playback none/cue/list
	File Index
	End Action
Timecode Setup	TC Type ATC
	File Index
	Offset Hrs
	Offset Min
	Offset Sec
	Offset mS
Test Mode	Enable light
	Test Pattern 1-999
	Brightness 0-100
	Master Size 0-100
Master Settings	Brightness 0-100
	Master Size 0-100

	X Scale
	Y Scale
	Invert X
	Invert Y
	Swap XY
	Rescan Time 500
Geo Correction	X Scale
	Y Scale
	X Position
	Y Position
	Z Rotation
	X Shear
Color settings	Y Shear
	Color Shift 0-7
	Red
	Green
	Blue
	Deep Blue
	Yellow
Scan Guard	Cyan
	Enable Guard
	Horizon Level 0-100
	Horizon Angle -45-45
	Min.Velocity 1-300
	Dwell Time 1-300
Network Setup	Invert Y
	Auto IP
	Address 1
	Address 2
	Address 3
	Address 4
	Mask 1
	Mask 2

FB4 Device info	Mask 3
	Mask 4
	Serial NO.
	Firmware
Exit Menu	Build NO.

● 1.1 FB4 Operating instructions :



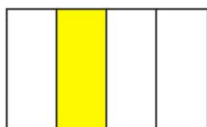
GREEN-Power &SD card status

- OFF:No Power

-FLASHING:Not used at the moment

-BLINKING:No SD Card

-SOLID ON:SD card Present



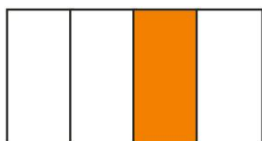
YELLOW-Network status

- OFF:Network is not detected

-FLASHING:Obtaining Address

-BLINKING:IP Address Obtained

-SOLID ON:Connected to QS or BEYOND

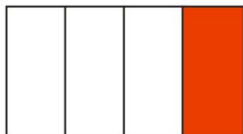


ORANGE-DMX & Art Net status

- OFF:No active DMX or Art NET signal detected

-BLINKING:DMX signal detected

-SOLID ON:Art-NET or Scan detected

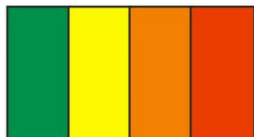


RED-light Emission status

- OFF:No light output(and no connection to QS or BEYOND)

-SLOW BLINKING:QS or BEYOND active and light output disabled

-BLINKING:QS or BEYOND active and light output is enabled



-ALL 4 LEDS BLINKING :Waiting for firmware Update and No Valid firmware on the SD Card

ALL 4 LEDS SOLID ON :Firmware Update in Progress

● DMX-512 control mode:

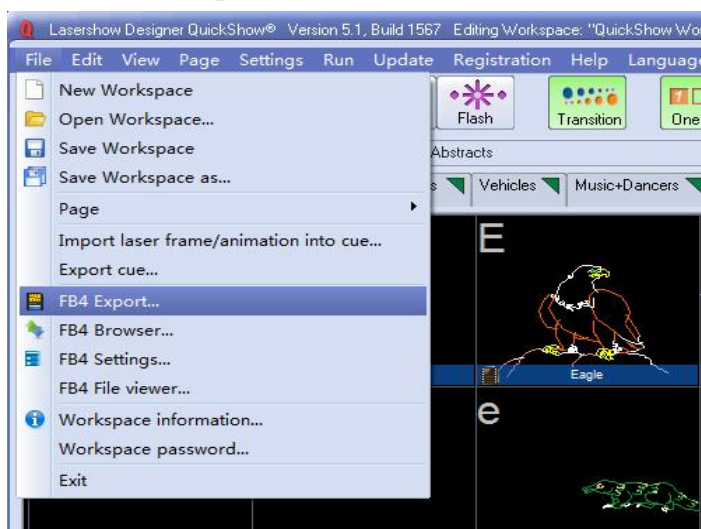
Function		value	Description
CH1	ACCESS	0-31	blackout
		33-95	basic range CH2-CH4 valid
		97-159	standard range ch1~ch8 valid
		161-223	extended range ch1~ch12 valid
		225-255	full range ch1~ch16 valid
CH2	Page	0-15	1 page
		17-31	2 page
		33-47	3 page

		49-63	4 page
		65-79	5 page
		81-95	6 page
		97-111	7 page
		113-127	8 page
		129-255	9 page
CH3	Cue	0-31	off
		33-222	Cue 1-48
		225-255	repear
CH4	speed	0-15	100%
		17-31	pause
		33-255	25%-200%
CH5	light (TTL mode can not use it)	0-255	0-100%
CH6	zoom	0-255	0-100%
CH7	X size	0-255	100%-0-100%
CH8	Y size	0-255	100%-0-100%
CH9	Z angle	0-255	0-360°
CH10	X position	0-255	Left - center - right
CH11	Y position	0-255	Down - center - up
CH12	Valid visible point	0-255	0-100% No visible points - all points visible
CH13	Scanner K	0-31	default
		33-223	6k-29k
		225-255	30k
CH14	release	0-31	default
		33-95	hold
		97-159	loop
		161-223	next
		225-255	stop
CH15	color	0-31	default

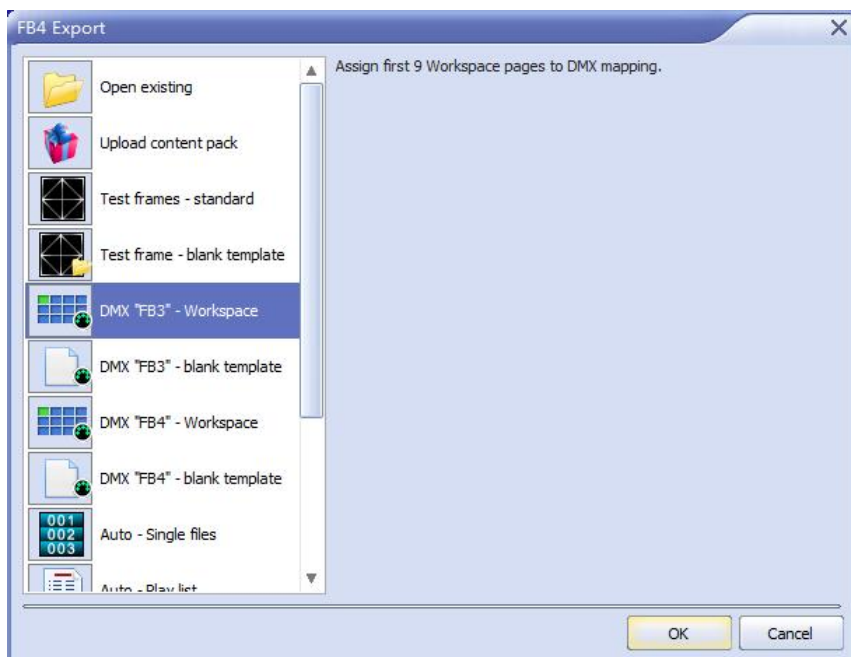
		33-223	RED-ORANGE-YELLOWLIME-REEM -CYAN-BLUEPURPLE-PINK-RED-W HITE
		225-255	white
CH16	reseved	0-255	reserved

FB4 DMX pattern export steps

1.after FB4 hardware link company, open FB4 Export.(Noted SD card must be input FB4)



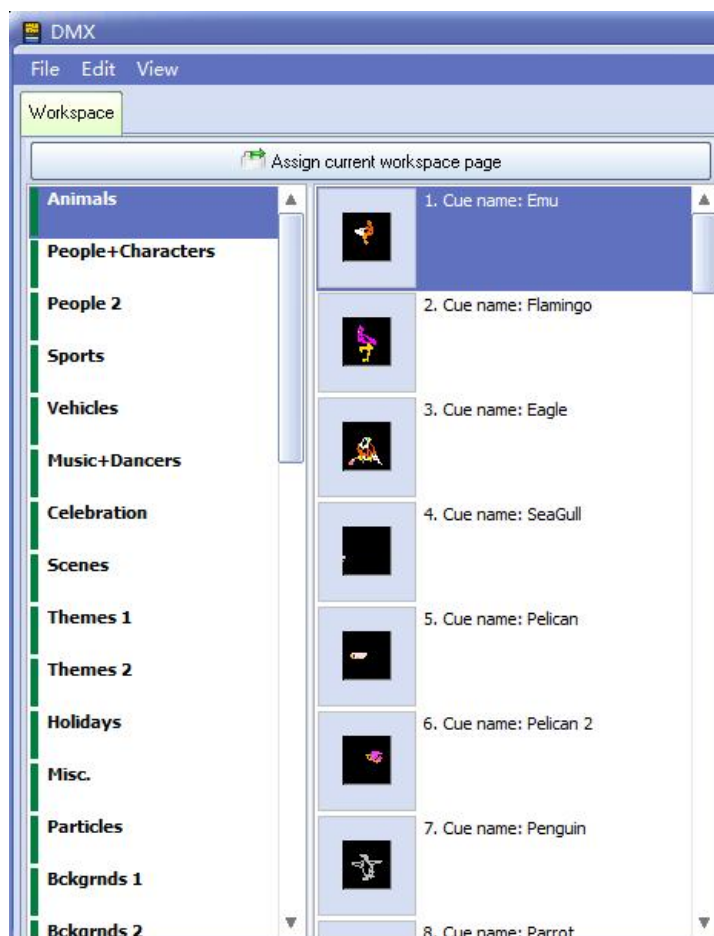
2.choose DMX"FB3"-Workspace, then Click OK.



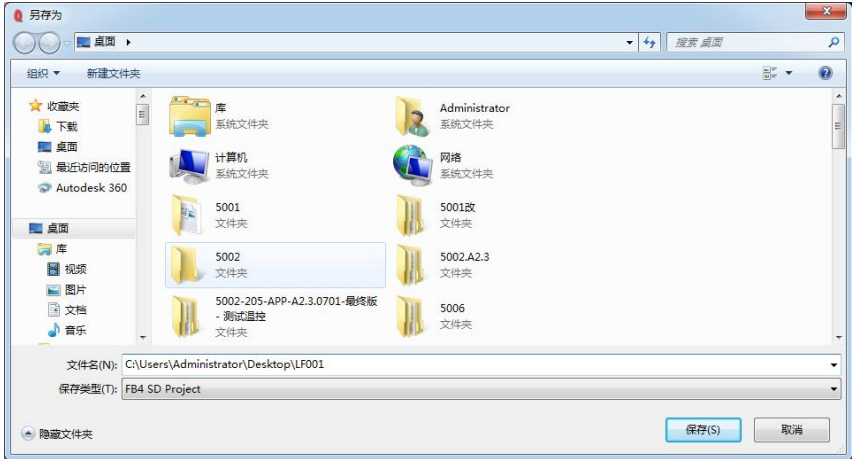
3. Select a blank program grid on the program page on the right. There are 9 program pages in total, and each page has 48 different program grids corresponding to different DMX values. (Click on the upper part to clear a single program grid, or right-click the program page to clear the entire program page)



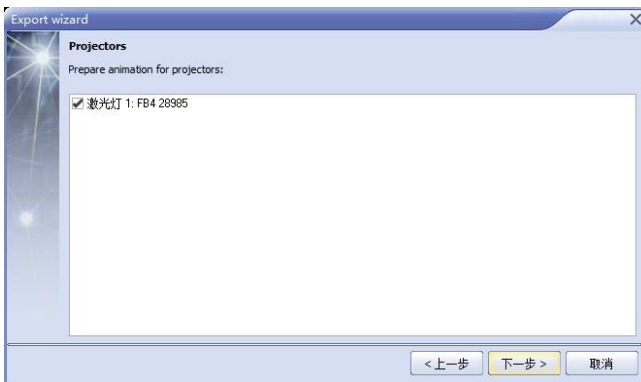
4. Select the desired program in the program workspace on the left, double-click the left button or drag the mouse to the blank program grid on the right.



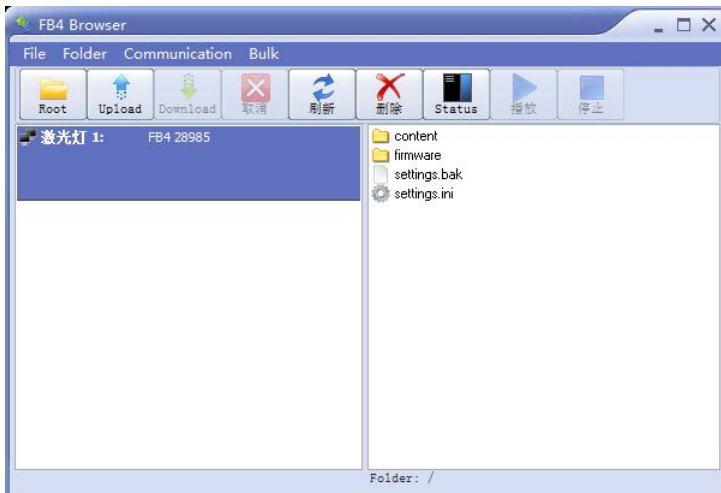
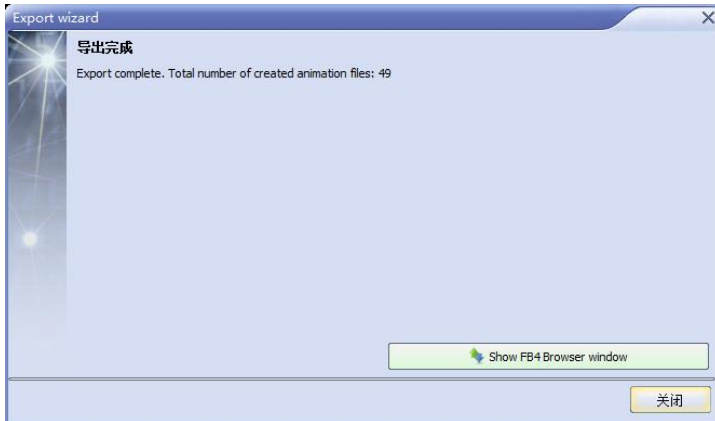
5.After selecting the desired program, click Export in the lower right corner, select your own appropriate path and file name in the pop-up window, and select Save.



6.At the prompt of the system, select the next step, and then select the FB4 box you want to upload the program, and continue to select the next step until you read the article. (When the computer is connected to only one box, just click Next)

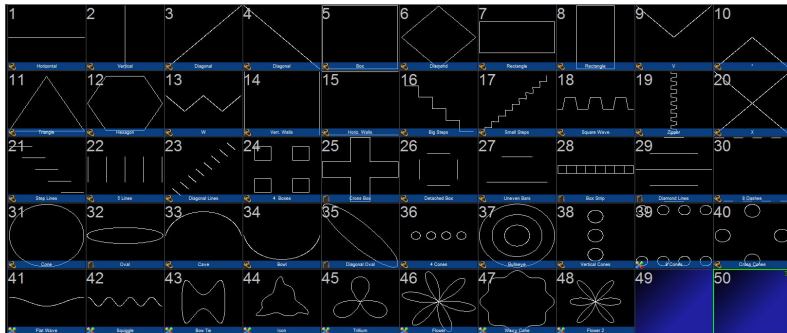


7. After the progress bar is finished, it only means that the data has been saved to the computer. At this time, click the FB4 Window in the lower right corner to see if the data has been uploaded to FB4. If it is still downloading, continue to wait until the progress bar is finished.

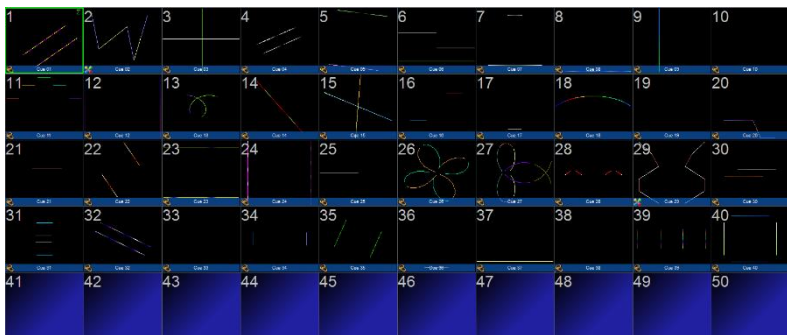


- The content of the default program page shipped by our company is as follows ;

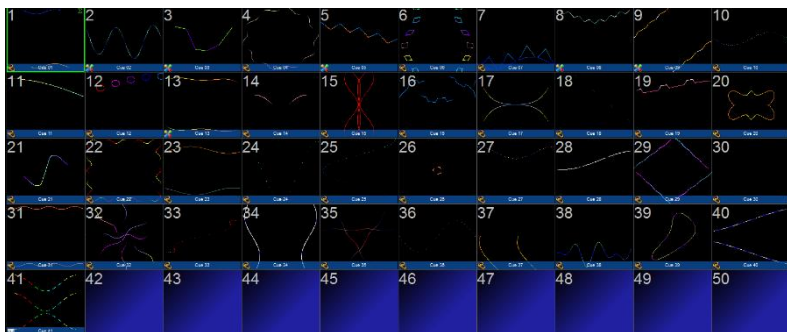
Page 1



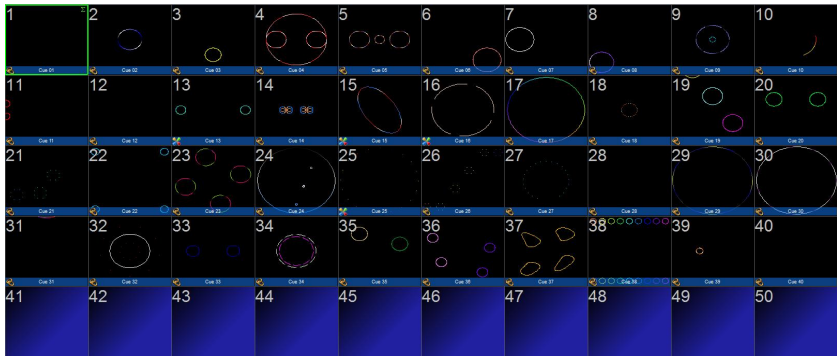
Page 2



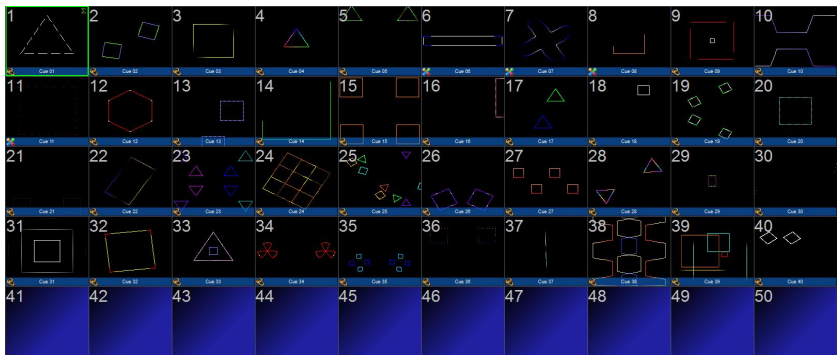
Page 3



Page 4



Page 5



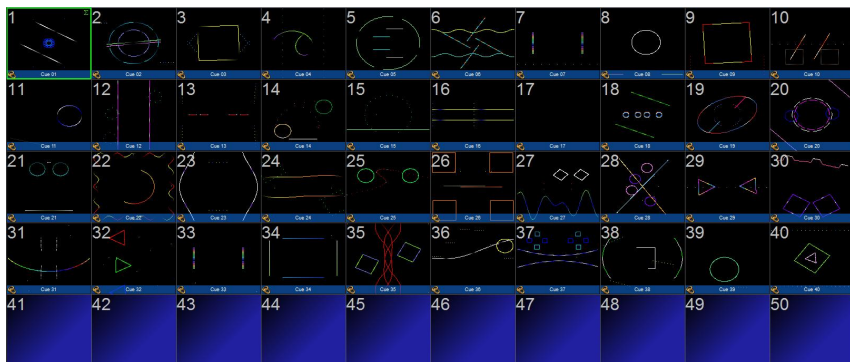
Page 6



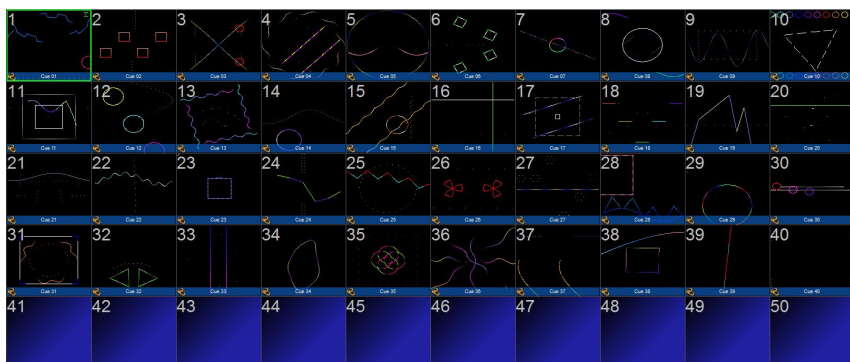
Page 7



Page 8



Page 9



7. Power supply and signal connections

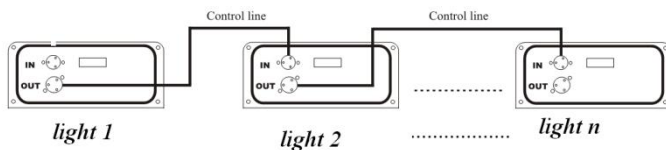
1. light power connection and control

Use a special plug to connect the light with the main cable of the power supply, should pay attention to the light label on the voltage and frequency and power supply is consistent. It is recommended that each table light has an independent power supply switch so that each table light can be turned on or off at any time.

2. Connection of light signal cable

This luminaire accepts digital signals in DMX512 (1990) format in voice-activated mode

Can work in host or slave mode. The master-slave mode also uses DMX connection. When using the cylindrical 3-core (5-core) XLP cable provided by the manufacturer, connect the XLR control cable from the DMX outlet of the controller to the DMX input port of each light, and from the DMX outlet of the first light to the DMX input port of the second light, and so on until all lights are connected. Then connect the loop plug at the signal outlet of the last light to complete the connection, as shown in the figure:



8. Maintenance

1. Maintenance should be performed every 15-day period, by using a sponge which is dipped with alcohol, rather than wet cloth or other chemical liquid, to clean the mirror. Always disconnect from the power when the device is not in use or before cleaning it.

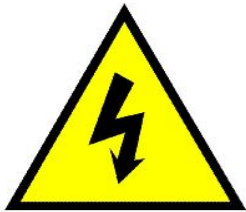
2. Cooling fan cleaning: Use compressed air to clean the fan of the device. The fan position plays a vital role in the normal operation of the device. Please ensure the normal operation of the fan.

3. When the equipment is used frequently, the fan should be cleaned every 1 month, or in a dusty and oily environment, the number of cleanings should be increased. The actual operation should be implemented according to the application environment of the equipment to ensure the normal operation of the fan.

4. Internal optical cleaning: cleaning internal optical components requires professional authorized technicians to operate. Incorrect cleaning techniques or improper cleaning choices can cause serious damage to the equipment. Since the optical part and the rest of the light source system are separated and sealed, this operation should not be performed more than once a year.

9. Warning and Declaration

Do not look directly at the light source with your eyes when turning on the light. Before any installation and maintenance work, please make sure that the power has been cut off.



电学安全

Electrical safety



光学安全

Optical security

Product common breakdown comparative chart	
breakdown cause	Major breakdown analysis and solution
The light no emitting or no work	<div>1. Check the power cable whether to connect the light,whether the fuse does burn out</div> <div>2. Check the input voltage whether to assign the voltage match with the light.</div> <div>Check work order is normal reset or not.</div>
No sound control	<div>1.Check whether the keys on the display screen are set to the voice control mode according to the instructions.</div> <div>2. If the sound sensitivity value is small, select a larger value.</div>
The light can emit light normally and is not controlled by the	<div>1.Check whether the start address code of the display screen of the light is set correctly.</div> <div>2.Check whether the XLR signal is damaged.</div>

controller	
Master-slave synchronization mode, the master is normal, and the slave is abnormal	<p>1.Confirm that there is only one host, and the host is not connected to the DMX console, and set to voice control or auto-propelled mode.</p> <p>2.There is still a problem with the correct master and slave settings, please check the on cable cable.</p>
Key failure, no work	<p>1.Check whether any of the keys has not been reset normally.</p>
The light is dim and the brightness is obviously reduced	<p>1.Check whether the light source has reached the expiration date.</p> <p>2.Check whether the internal and external optical system is clean.</p>
If the fault cannot be eliminated according to the above method, please contact with dealer.	