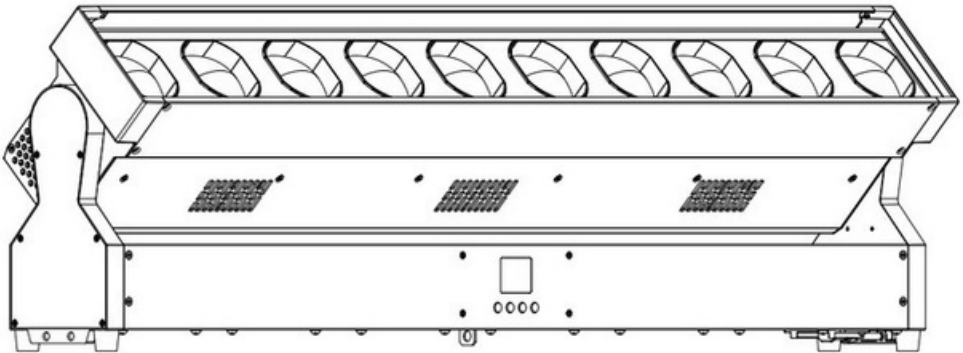

1060Z

**10*60w Pixels Zoom Bar
Moving Head**



User manual

Please read the instructions carefully before use

TABLE OF CONTENTS

1. Safety Instructions	3 - 4
2. Technical Specifications	4-5
3. How To Control The Unit	6-8
4. DMX Channel List.....	8-25
5. LUX Date.....	26
6. Shape.....	27
7.Trouble shooting.....	28

statement

The product has well capability and intact packing when leave factory. All of the user should comply with warning item and manual, any misuse cause of the damages are not included in our guarantee, and also can not be responsible for any malfunction & problem owing to ignore the manual.

1.Safety Instructions

Please keep this User Guide for future consultation. If you sell the unit to another user, be sure that they also receive this instruction booklet.

Unpack and check carefully there is no transportation damage before using the unit.

Before operating, ensure that the voltage and frequency of power supply match

the power requirements of the unit.

It's important to ground the yellow/green conductor to earth in order to avoid electric shock.

The unit is for indoor use only. Use only in a dry location.

The unit must be installed in a location with adequate ventilation, at least 50cm from adjacent surfaces. Be sure that no ventilation slots are blocked.

Disconnect main power before replacement or servicing.

Make sure there are no flammable materials close to the unit while operating as it is fire hazard.

Use safety cable when fixes this unit. DO NOT handle the unit by taking its head only, but always by taking its base.

Maximum ambient temperature is T_a : 40°C. DO NOT operate it where the temperature is higher than this Unit surface temperature may reach up to 85°C. DO NOT touch the housing bare-hand during its operation. Turn off the power and allow about 15 minutes for the unit to cool down before replacing or serving.

the event of serious operating problem, stop using the unit immediately. Never try to repair the unit by yourself. Repairs carried out by unskilled people can lead to damage or malfunction. Please contact the nearest authorized technical assistance center. Always use the same type spare parts.

DO NOT touch any wire during operation as high voltage might be causing electric shock.

Warning:

To prevent or reduce the risk of electrical shock or fire, do not expose the unit to rain or moisture.

DO NOT open the unit within five minutes after switching off.

The housing, the lenses, or the ultraviolet filter must be replaced if they are visibly damaged.

Caution:

There are no user serviceable parts inside the unit. DO NOT open the housing or attempt any repairs yourself. In the unlikely event your unit may require service, please contact your nearest dealer.

Installation:

The unit should be mounted via its screw holes on the bracket. Always ensure that the unit is firmly fixed to avoid vibration and slipping while operating. And make sure that the structure to which you are attaching the unit is secure and is able to support a weight of 10 times of the unit's weight. Also always use a safety cable that can hold 12 times of the weight of the unit when installing the fixture.

The equipment must be fixed by professionals. And it must be fixed at a place where is out of the touch of people.

2. Technical Specifications

Light Sources: Middle:10*60W 4IN1 RGBW LED Both sides:120*1W RGBA 4in1 LED

Average life span> 50000 hours
Beam Angle:4°- 45°
Glass light guide + PMMA high-quality optical lens
Power Consumption: 680W \pm 5%
Power Voltage: AC 100-240V, 50/60Hz
Dimension: 1000x129.5x281.5mm
Net Weight: 21 kgs
Carton size:108.5*22.5*37.5mm,GW:24.2kg

Control

DMX Channel:26/35/43/125CH
Control Modes: DMX512/Master-Slave/Auto Run/Music/RDM

Pan

200°, accuracy 1.2°/step, fine-tuning accuracy: 0.0034°;
Using magnetic coded reset system

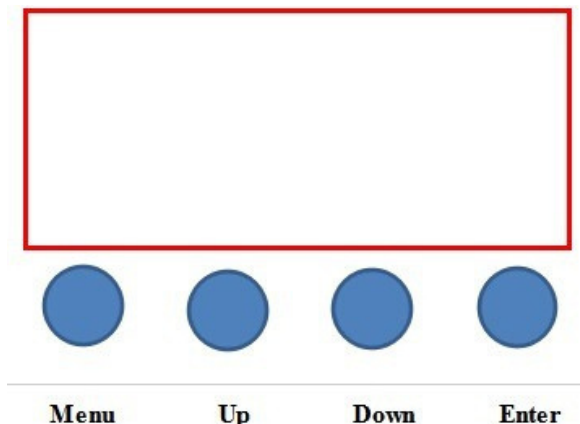
Construction

Display:1.8 inch TFT color display with 180° reversible ,
Data In/Out socket: 3-pin XLR sockets
Protection Rating: IP20

Features

Full optical domain dimming, 65536-level dimming accuracy;
Fast strobe 1~25Hz;
LED Single Control;
Single control of the LED bead in the middle, 20-section control on both sides;
It integrate 3in1 effect of wash, beam, and strobe;
Multiple presets color macro function; preset multiple effect macro functions

3.How To Control The Unit



Display:

MENU

DOWN

UP

ENTER

To select the programming functions

To go backward in the selected functions

To go forward in the selected functions

To confirm the selected functions

Set DMX Address Code

- 1 Press **"Menu"** to "Set DMX Address",and press**"ENTER"** keys to enter into
- 2 Show "Set DMX Address DMX Address:001",Press the **"UP and DOWN"** keys to amended
- 3 Press **"ENTER"**keys to save and Exit,Press the**"MENU"**Keys does not save and Exit

Menu 3.	1.Mic Sense	001 - 100,Sound sensitivity adjustment	
	2.Language	English	Chinese
	3.No Signal	1.Black Out 2.Hold	
	4.Fan Set	1.Auto 2.Low 3.High	
	5.Reset	Yes	No

	6.Default	Yes	No	
	7.Adjust	Pass Word:****		
		Tilt - 0 - 255	Change the value of Tilt/Focus to correct the angle; change the value of R/G/B/W to adjust the white balance	
		Focus1 - 0 - 255		
		Focus2 -0 - 255		
		Red-0 - 255		
		Green-0 - 255		
		Blue-0 - 255		
		White-0 - 255		
Address	Setting from 001 - 512			
Rever	Tilt Invert	1.Yes		
		2.No		
	Display Invert	1.Yes		
		2.No		
Inform	1.CH Value		Each channel value	
	2.Temp /°C		Temperature of led board	
	3.Soft V.XXX		Show the version number	
Mode	DMX 512		Set control mode	
	AUTO			
	SOUND			
	Master/Alone		Master/Alone	
		1.Tilt:0--255		
		2.Focus:0--255		
		3.Red1 0--255		
		4.Greed1 0--255		
		5.Blue1 0--255		

	Maunal	6.White1: 0--255	Maunal control mode
		7.Led1 Auto: 0--255	
		8.Led1 Auto Speed:	
		9.Red2: 0--255	
		10.Greed2:0--255	
		11.Blue2: 0--255	
		12.White2: 0--255	
		13.Led2	
		Auto :0--255	
		14.Led2 Auto	
		Speed 0--255	
		15.Strobe 0-255	
Channel	1.26Channels		Choose Channel Mode
	2.35Channels		
	3.43Channels		
	4.125Channels		

DMX Channel List

Model 1 - CH26

Channel

	Display		Function	Value
1	Middel 60W	Red	Red dimming	0--255
2		Red adjustment	Red fine adjustment	0--255

3	Green	Green dimming	0--255
4	Green adjustment	Green fine adjustment	0--255
5	Blue	Blue dimming	0--255
6	Blue adjustment	Blue fine dimming	0--255
7	White	White dimming	0--255
8	White adjustment	White fine adjustment	0--255
9	Linear color temperature	No funtion	0--4
		Color temperture from warm to cold	5--255
10	Marco color	No funtion	0--9
		Marco color	10--255
11	Dimming	Linear dimming dark to bright	0--255
12	Dimming adjustment	Dimming fine-tuning control Turn on the light	0--255
13	Strobe		0--3
		Synchro strobe speed slow to fast (1HZ-25HZ)	4--203

			Random strobe	204--255
14	Both sides 1W LED	R dimming	Linear dimming dark to bright	0--255
15		G dimming	Linear dimming dark to bright	0--255
16		B dimming	Linear dimming dark to bright	0--255
17		A dimming	Linear dimming dark to bright	0--255
18		Marco color	No funtion	0--9
			Marco color	10--255
19		Dimming	Linear dimming dark to bright	0--255
20		Strobe	Turn on the light	0--3
			Synchro strobe speed slow to fast (1HZ-25HZ)	4--203
			Random strobe	204--255
21	Dimming mode		Mode 1	0--49

		Mode 2	50--99
		Mode 3	100--149
		Mode 4	150--255
22	Tilt	Tilt control	0--255
23	Tilt adjustment	Tilt fine adjustment	0--255
24	Tilt speed	Fast to slow	0--255
25	Focus	Focus	0--255
26	Reset	No function	0--250
		Reset within 5s	251--255

Model 2 - CH35

Channel	Display	Function	Value
---------	---------	----------	-------

1	Tilt		Tilt control	0--255
2	Tilt adjustment		Tilt fine adjustment	0--255
3	Tilt speed		Fast to slow	0--255
4	Focus		Focus	0--255
5	Middel 60W	Dimming	Linear dimming dark to bright	0--255
6		Strobe	Turn on the light	0--3
			Synchro strobe speed slow to fast (1HZ-25HZ)	4--203
			Random strobe	204--255
7		R dimming	Linear dimming dark to bright	0--255
8		G dimming B	Linear dimming dark to bright	0--255
9		dimming W	Linear dimming dark to bright	0--255
10		dimming	bright	0--255
11		Linear color temperature	No funtion	0--4
			Color temperture from warm to cold	5--255
12			Marco color	No funtion

		Marco color	10--255
13	Dynamic pattern	No funtion	0--9
		Dynamic pattern 1	10--12
		Dynamic pattern 2	13--15
	 (3 numbers and one type)
		Dynamic pattern 32	103--105
		reserve	106--255
14	Pattern translation (with 13 CH)	Choose pattern background	0--255
15	Dynamic pattern speed (with 13 CH)	No funtion	0--9
		Go forward from fast to slow	10--132
		Go backward from slow to fast	133--255
16	Pattern backgroud color R(with	Linear dimming dark to bright	0--255

		13 CH)		
17		Pattern background color G(with 13 CH)	Linear dimming dark to bright	0--255
18		Pattern background color B(with 13 CH)	Linear dimming dark to bright	0--255
19		Pattern background color W(with 13 CH)	Linear dimming dark to bright	0--255
20		Dimming	linear dimming from dark to bright	0--255
21		Strobe	Light up	0--3
			Synchro strobe speed From slow to fast (1HZ-25HZ)	4--203

	Both sides 1W LED		Random strobe	204--255
22		R dimming	Linear dimming dark to bright	0--255
23		G dimming	Linear dimming dark to bright	0--255
24		B dimming	Linear dimming dark to bright	0--255
25		A dimming	Linear dimming dark to bright	0--255
26		Marco color	No funtion	0--9
			Marco color	10--255
27		Dynamic pattern	No funtion	0--9
			Dynamic pattern 1	10--12
			Dynamic pattern 2	13--15
			(3 numbers and one type)

		Dynamic pattern 50	157--159
		reserve	160--255
28	Pattern translation (with 27 CH)	Choose pattern background	0--255
29	Pattern self-propelled speed (with 27 CH)	No function	0--9
		Go forward from fast to slow	10--132
		Go backward from slow to fast	133--255
30	Pattern background color R (with 27 CH)	Linear dimming dark to bright	0--255
31	Pattern background color G (with 27 CH)	Linear dimming dark to bright	0--255
32	Pattern background	Linear dimming dark to bright	0--255

		color B(with 27 CH)		
33		Pattern backgroud color A(with 27 CH)	Linear dimming dark to bright	0--255
34	Dimming mode		Mode 1	0--49
			Mode 2	50--99
			Mode 3	100--149
			Mode 4	150--255
35	Reset		No funtion	0--250
			Reset within 5s	251--255

Model 3 - CH43

Channel	Display	Function	Value
1	Tilt	Tilt control	0--255

2	Tilt adjustment		Tilt fine adjustment	0--255
3	Tilt speed		Fast to slow	0--255
4	Focus		Focus	0--255
5	Middel 60W	Dimming	Linear dimming dark to bright	0--255
6		Dimming adjustment	Dimming fine adjustment control	0--255
7		Strobe	Turn on the light	0 - - 3
			Synchro strobe speed slow to fast (1HZ-25HZ)	4 - - 2 0 3
			Random strobe	2 0 4 - 2 5 5
8		R dimming	R dimming	0--255
9		R Dimming adjustment	R fine adjustment	0--255
10		G dimming	G dimming	0--255
11		G Dimming adjustment	G fine adjustment	0--255
12		B dimming	B dimming	0--255
13	B Dimming adjustment	B fine adjustment	0--255	

14	W dimming	W dimming	0--255
15	W Dimming adjustment	W fine adjustment	0--255
16	Linear color temperature	No function	0--4
		Color temperature from warm to cold	5--255
17	Marco color	No function	0--9
		Marco color	10--255
18	Dynamic pattern	No function	0 - - 9
		Dynamic pattern 1	1 0 - - 1 2
		Dynamic pattern 2	1 3 - - 1 5
	 (3 numbers and one type)
		Dynamic pattern 32	1 0 3 - - 1 0 5
		reserve	1 0 6 - - 2 5 5
19	Pattern translation	Choose pattern background	0--255

		(with 18 CH)		
20	pattern auto speed (with 18 CH)		No function	0--9
			Go forward from fast to slow	10--132
			Go backward from slow to fast	133--255
21	Pattern effect fade (with 18 CH)		Pattern fade effect	0 - - 2 5 5
22	Background dimming (with 18 CH)		Background 0-100% dimming	0 - - 2 5 5
23	Background strobe(with 18 CH)		Background strobe	0 - - 2 5 5
24	Pattern background color R(with		Pattern effect R	0 - - 2 5 5

		18 CH)		
25		Pattern background color G(with 18 CH)	Pattern effect G	0 - - 2 5 5
26		Pattern background color B(with 18 CH)	Pattern effect B	0 - - 2 5 5
27		Pattern background color W(with 18 CH)	Pattern effect W	0 - - 2 5 5
28		Dimming	linear dimming from dark to bright	0--255
29		Strobe	Light up	0--3
			Synchro strobe speed From slow to fast	4--203

	Both sides 1W LED		(1HZ-25HZ)	
			Random strobe	204--255
30		R dimming	Linear dimming dark to bright	0--255
31		G dimming	Linear dimming dark to bright	0--255
32		B dimming	Linear dimming dark to bright	0--255
33		A dimming	Linear dimming dark to bright	0--255
34		Marco color	No funtion	0--9
			Marco color	10--255
35		Dynamic pattern	No funtion	0 - - 9
			Dynamic pattern 1	1 0 - - 1 2
			Dynamic pattern 2	1 3 - - 1 5
		 (3 numbers and one

			type)
		Dynamic pattern 50	1 5 7 - - 1 5 9
		reserve	1 6 0 - - 2 5 5
36	Pattern translation (with 35 CH)	Choose pattern background	0--255
37	Pattern self-propelled speed (with 35 CH)	No function	0 - - 9
		Go forward from fast to slow	1 0 - - 1 3 2
		Go backward from slow to fast	1 3 3 - - 2 5 5
38	Pattern background color R(with 35 CH)	Linear dimming dark to bright	0--255
39	Pattern background color G(with	Linear dimming dark to bright	0--255

		35CH)		
40		Pattern background color B(with 27 CH)	Linear dimming dark to bright	0--255
41		Pattern background color A(with 35CH)	Linear dimming dark to bright	0--255
42	Dimming mode		Mode 1	0--49
			Mode 2	50--99
			Mode 3	100--149
			Mode 4	150--255
43	Reset		No funtion	0--250
			Reset within 5s	251--255

Model 4 - CH125

Channel	Display		Function	Value
1	Tilt		Tilt control	0--255
2	Tilt adjustment		Tilt fine adjustment	0--255
3	Tilt speed		Fast to slow	0--255
4	Focus		Focus	0--255
5	Reset		No function	0--250
			Reset within 5s	251--255
6	Middle 60W	R1 LED dimming	R1 LED dimming	0--255
7		G1 LED dimming	G1 LED dimming	0--255
8		B1 LED dimming	B1 LED dimming	0--255
9		W1 LED dimming	W1 LED dimming	0--255
...
42		R10 LED dimming	R10 LED dimming	0--255
43		G10 LED dimming	G10 LED dimming	0--255
44		B10 LED dimming	B10 LED dimming	0--255
45		W10 LED	W10 LED dimming	0--255

		dimming		
46	Both sides 1W LED	R1 LED dimming	R1 LED dimming	0--255
47		G1 LED dimming	G1 LED dimming	0--255
48		B1 LED dimming	B1 LED dimming	0--255
49		A1 LED dimming	A1 LED dimming	0--255
...
122		R20 LED dimming	R20 LED dimming	0--255
123		G20 LED dimming	G20 LED dimming	0--255
124		B20 LED dimming	B20 LED dimming	0--255
125		A20 LED dimming	A20 LED dimming	0--255

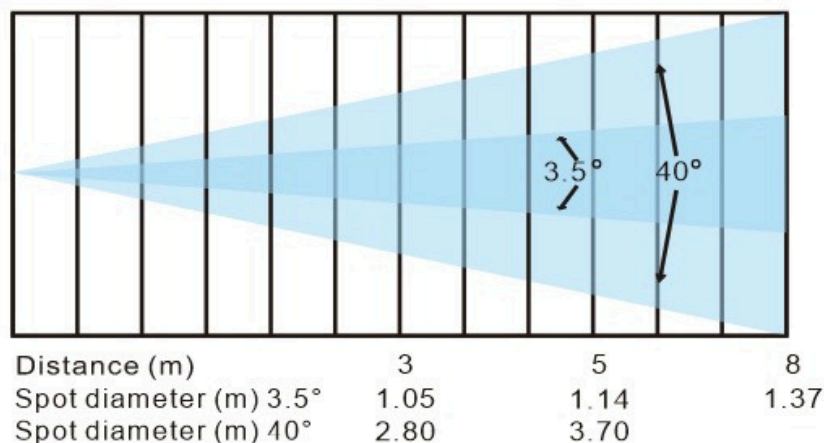
5.LUX Date

Zoom Angle = 3.5°

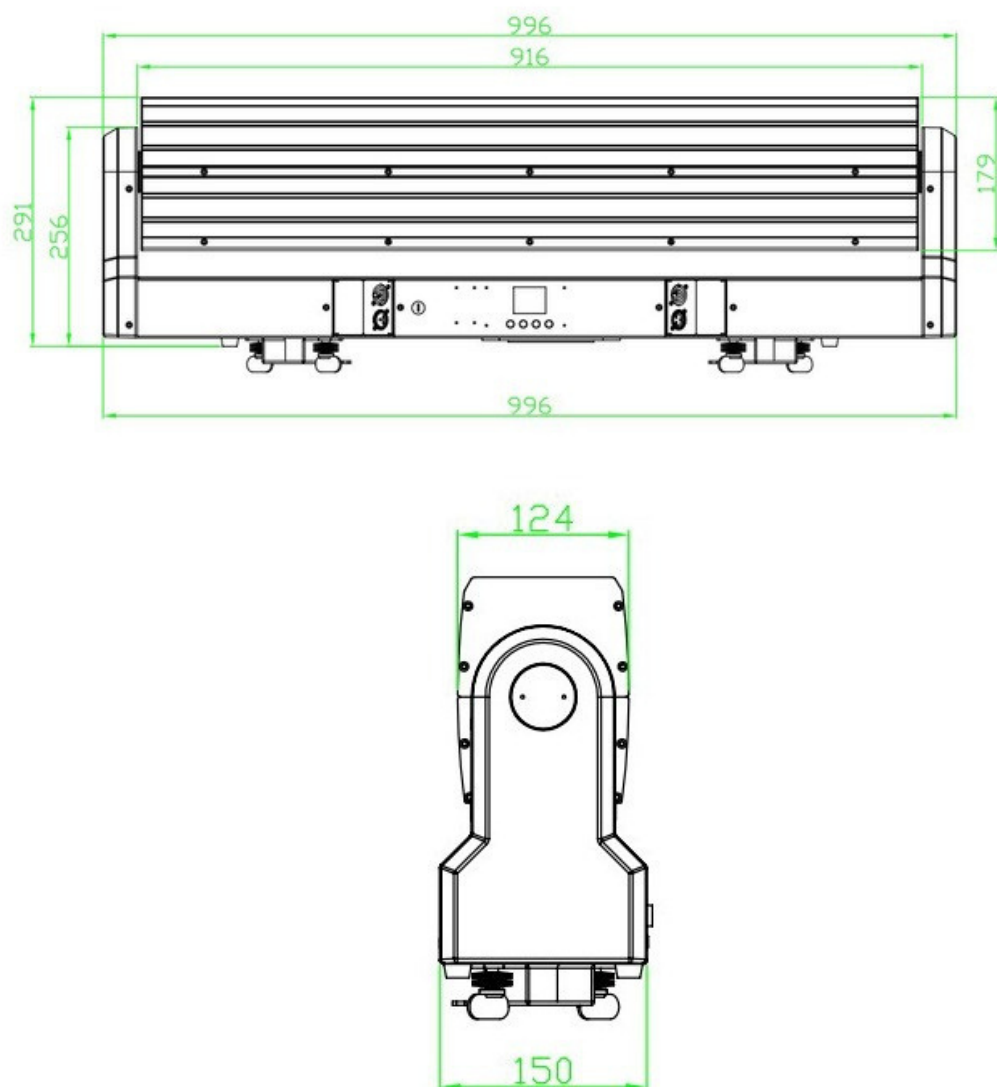
R lux	5690	2400	1650
G lux	17000	7560	5390
B lux	2970	1470	1020
W lux	25500	10200	7400
4in1 lux	46500	19600	14700

Zoom Angle = 40°

R lux	618	255	113
G lux	2490	1070	459
B lux	528	231	98
W lux	3460	1470	616
4in1 lux	6500	2780	1170



6. Shape



7.Trouble shooting

Following are a few common problems that may occur during operation. Here are some suggestions for easy troubleshooting:

A.The unit does not work, no light and the fan does not work

- 1.Check the connection of power and main fuse.
- 2.Measure the mains voltage on the main connector.
- 3.Check the power on LED.

B.Not responding to DMX controller

- 1.DMX LED should be on. If not, check DMX connectors, cables to see if link properly.
- 2.If the DMX LED is on and no response to the channel, check the address settings and DMX polarity.
- 3.If you have intermittent DMX signal problems, check the pins on connectors or on PCB of the unit or the previous one.
- 4.Try to use another DMX controller.
- 5.Check if the DMX cables run near or run alongside to high voltage cables that may cause damage or interference to DMX interface circuit.

C.One of the channels is not working well

- 1.The stepper motor might be damaged or the cable connected to the PCB is broken.
- 2.The motor's drive IC on the PCB might be out of condition



LIGHTING



+34 638626 631

www.soundlightspain.com